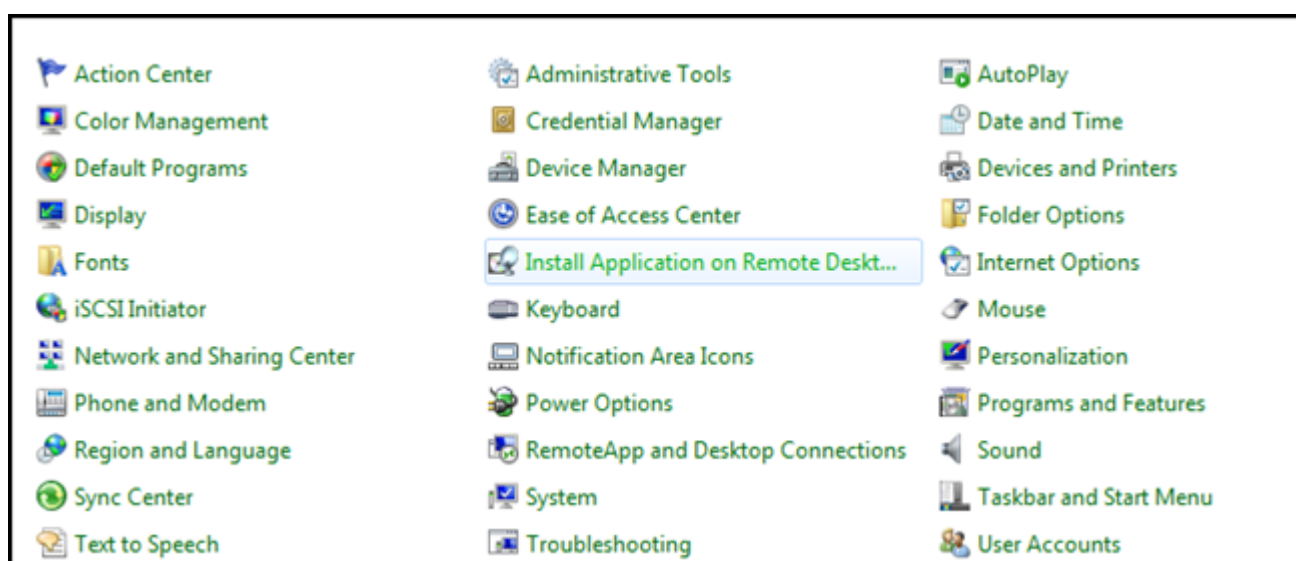


# Correctly Install Applications on a Remote Desktop Server

When installing an application on a Terminal Server, because multiple people will be using the application at once, there is actually a special method that you should use to install the applications. Here's two methods to do it the right way.

## The GUI Method [Starting from Server 2012]

To get started open control panel. Switch to the small icon view, and look for Install Application on Remote Desktop Server, double-click on it. Now you can simply go through the next, next, finish style wizard which will help you get the application installed.



## The Command Line Method [Server 2008 & The Best Practice]

You will need to change your user mode to installation mode by using the **Change User /Install** comand.

you could go ahead and safely install the application, but once the application is installed don't forget to change back to execution mode, you can do so by running the **Change User /Execute** command.