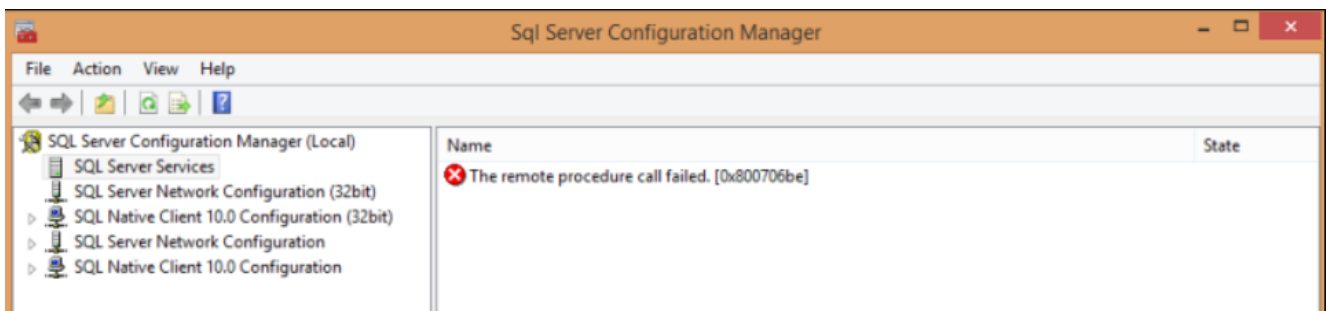


# SQL configuration manager remote procedure call failed (0x800706be)

There are some situations When you open SQL server configuration manager you get an error saying “Remote procedure call failed (0x800706be)”



There may be 2 possible root causes to trigger this error;

**Issue 1.** Shared Files for All Instances of SQL Server

**Issue 2.** Not pointing the correct Configuration Manager Path in an Multi DB instance environment

Below, will try to address all those two possible issues

**Issue 1 Solution:**

Common files used by all instances on a single computer are installed in the folder `<drive>:\Program Files\Microsoft SQL Server\<nnn>`. `<drive>` is the drive letter where components are installed. The default is usually drive C. `<nnn>` identifies the version. The following table identifies versions for the paths.

<code>&lt;nnn&gt;</code>	Version
140	SQL Server 2017
130	SQL Server 2016
120	SQL Server 2014
110	SQL Server 2012

100

SQL Server 2008

We will do step by step:

### 1. Checking the WMI Repository

If using Window Server 2008 and above, run command from command prompt to verify WMI repository: `winmgmt /verifyrepository`

If you get any error, please contact your OS team for WMI rebuild.

### 2) Recompile the MOF file

```
cd C:\program files (x86)\Microsoft SQL server\140\shared
```

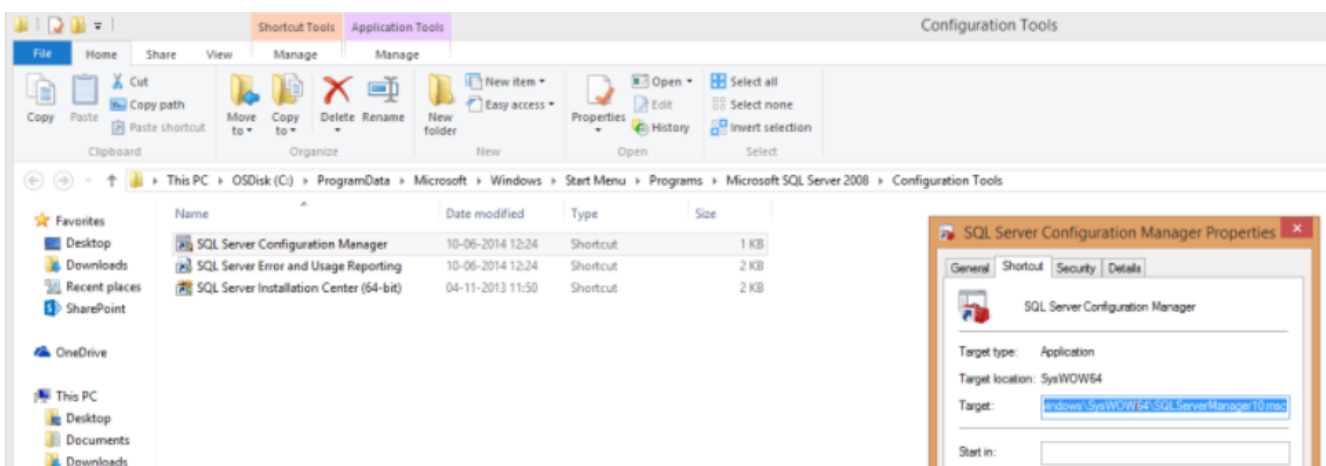
```
c:\program files (x86)\Microsoft SQL server\140\shared>mofcomp.exe  
sqlmgmproviderxpsp2up.mof
```

### 3) Re-register the SQL Server provider DLL

```
regsvr32 "C:\program files (x86)\Microsoft SQL  
server\140\shared\sqlmgmprovider.dll"
```

## Issue 2 Solution:

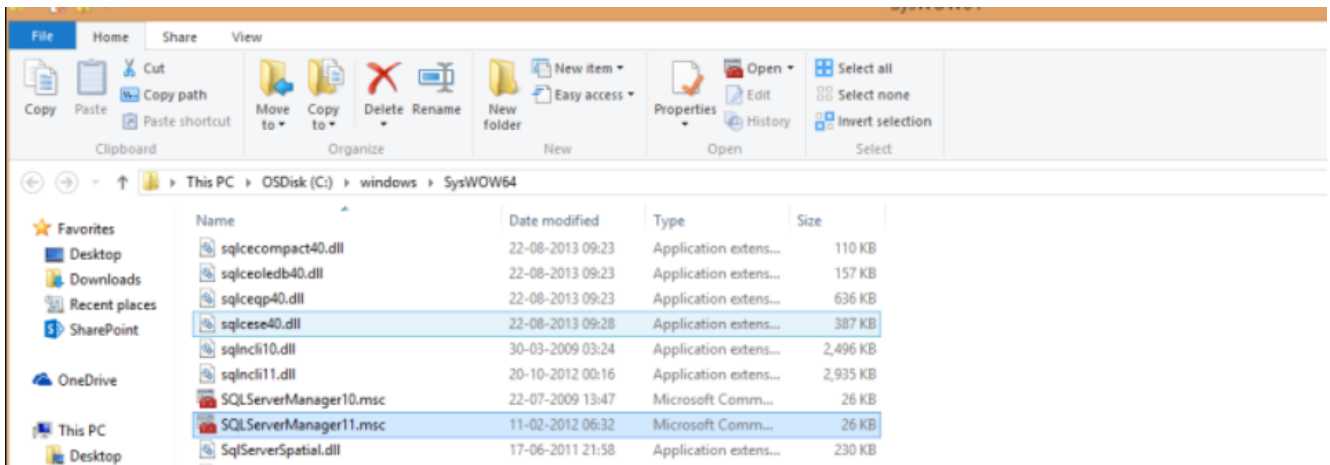
Step 1: Open the SQL server configuration manager location through Windows Start->type SQL server configuration manager ->right click->Open file location



you may notice that the shortcut is pointing to SQLServerManager10.msc or any

other

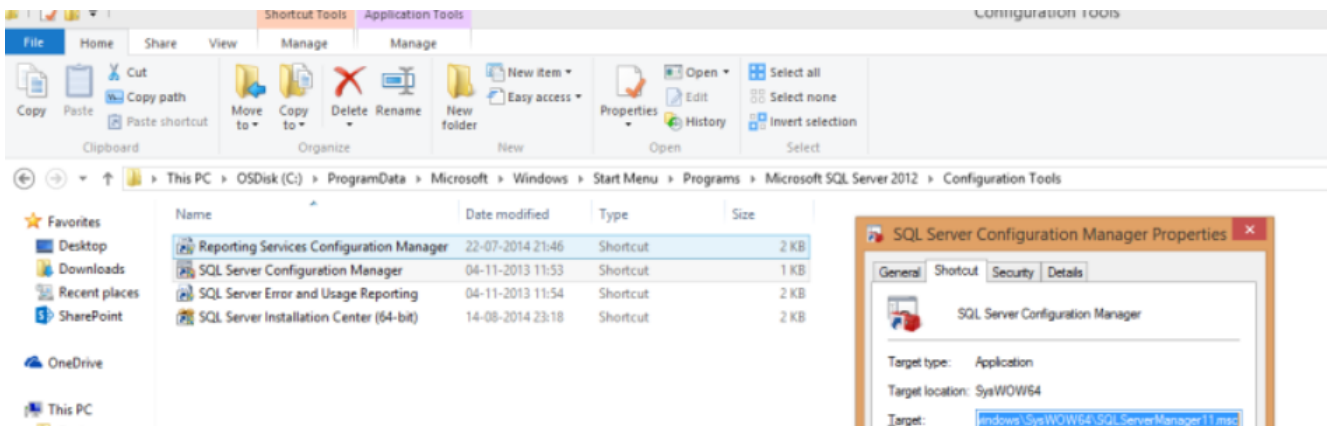
Step 2: go to the path where the msc is located



Step 3: you will see there is a higher version of the same is present in my case SQLServerManager11.msc, so I changed the shortcut path to the latest version i.e. I changed target of the SQL configuration manager shortcut to as below;

```
C:\Windows\SysWOW64\mmc.exe /32
```

```
C:\windows\SysWOW64\SQLServerManager11.msc
```



Step 4: After saving the above change, open the SQL Server Configuration manager from the Windows start menu. and now you should see all the SQL server Services in it.

File Action View Help

← → ↗ 📄 ↵ ? ▶ ⏸ ⏹ ↺

SQL Server Configuration Manager (Local)

- SQL Server Services
- SQL Server Network Configuration (32bit)
- SQL Native Client 11.0 Configuration (32bit)
- SQL Server Network Configuration
- SQL Native Client 11.0 Configuration

Name
SQL Server Integration Services 11.0
SQL Server (SQLEXPRESS)
SQL Server (SQLEXPRESS12)
SQL Full-text Filter Daemon Launcher (MSSQLSERVER)
SQL Full-text Filter Daemon Launcher (SQLEXPRESS12)
SQL Server (MSSQLSERVER)
SQL Server Analysis Services (MSSQLSERVER)
SQL Server Reporting Services (MSSQLSERVER)
SQL Server Reporting Services (SQLEXPRESS12)
SQL Server Agent (SQLEXPRESS)
SQL Server Agent (SQLEXPRESS12)
SQL Server Browser
SQL Server Agent (MSSQLSERVER)